

THE ORIGIN

SUKHUMVIT-SAILUAT
E22 STATION

Project Details

Project	The Origin E22 Station
Company	Origin Sukhumvit-Sailuat Co.,Ltd
Location	<ul style="list-style-type: none">• Sailuat Road, Samut Prakan• 222 Meters to BTS Sailuat Station Sukhumvit line (E22)• 40 Minutes to Suvarnabhumi Airport
Area	3-2-0 Rais
Project Type	I High-rise Building with 31 Storeys I parking building with 10 Storeys
Residential Unit	998 Units + 3 Retail Shops
Parking Area	35% includes double parking
Room Types	I Bedroom (Smart Closet) : 22 Sq.m I Bedroom : 26 Sq.m. I Bedroom Plus : 34.5 Sq.m.
Construction Complete	Q1/2021 Q2/2023

*Project's EIA Approved

PRIVATE LOBBY



*COMPUTER GENERATED IMAGERY

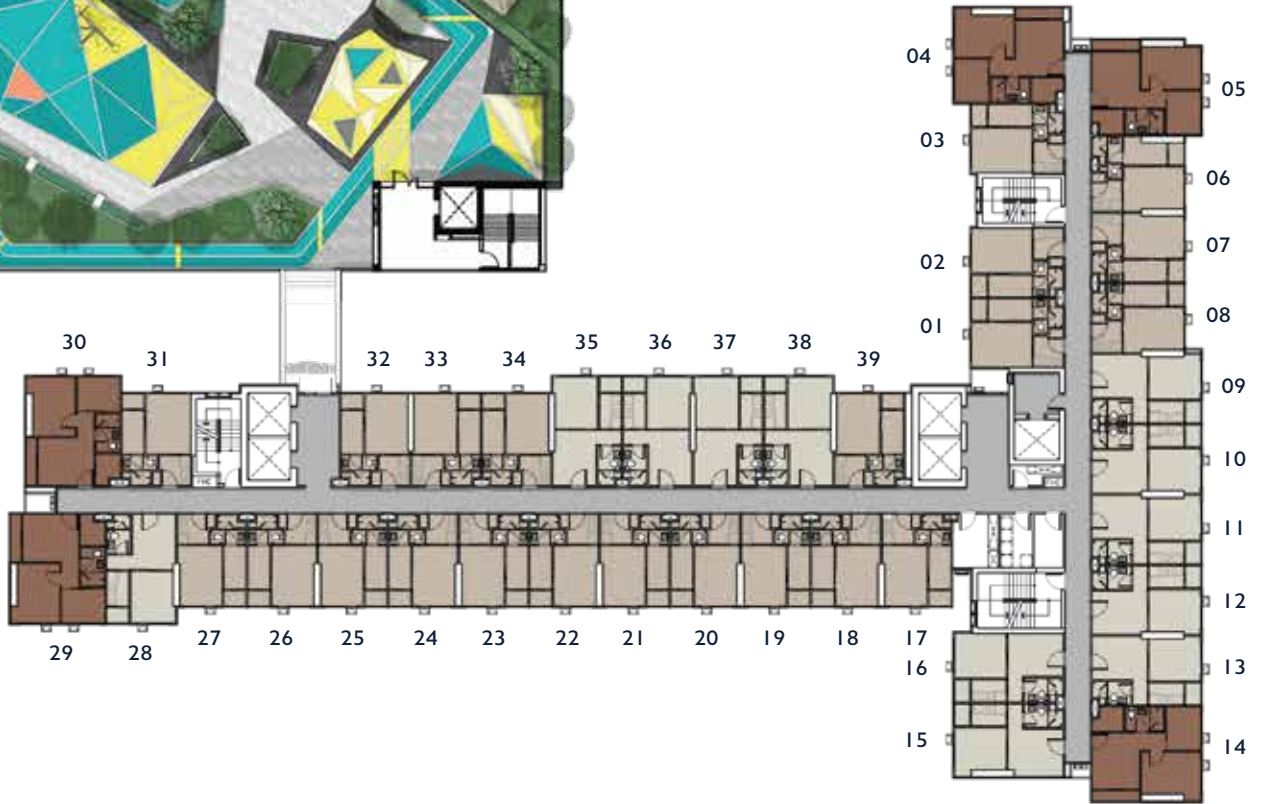
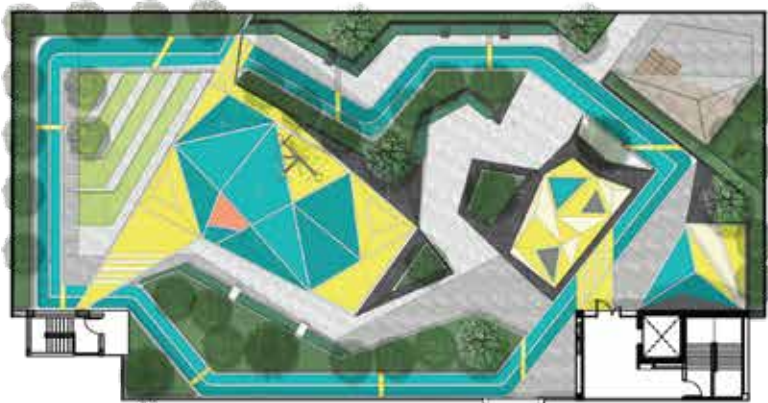


Facilities

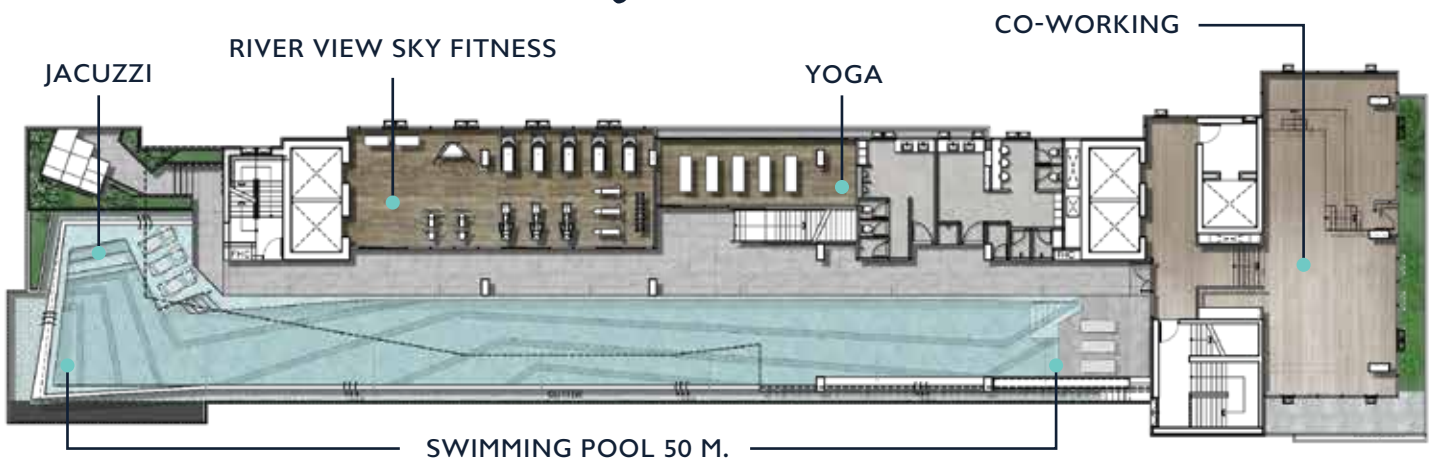
- Shop • Main Lobby • Private Lobby • Fitness
- Co-Working Space • Swimming Pool 50 m.
- Sky Lounge • Sky Garden • View Point
- Multi Sport Arena (Basketball & Skateboard)
- Active Play Space (Rock Climbing & Trampoline)
- Game Room • Studio Room

*COMPUTER GENERATED IMAGERY

Typical Floor Plan



29th Floor Facility



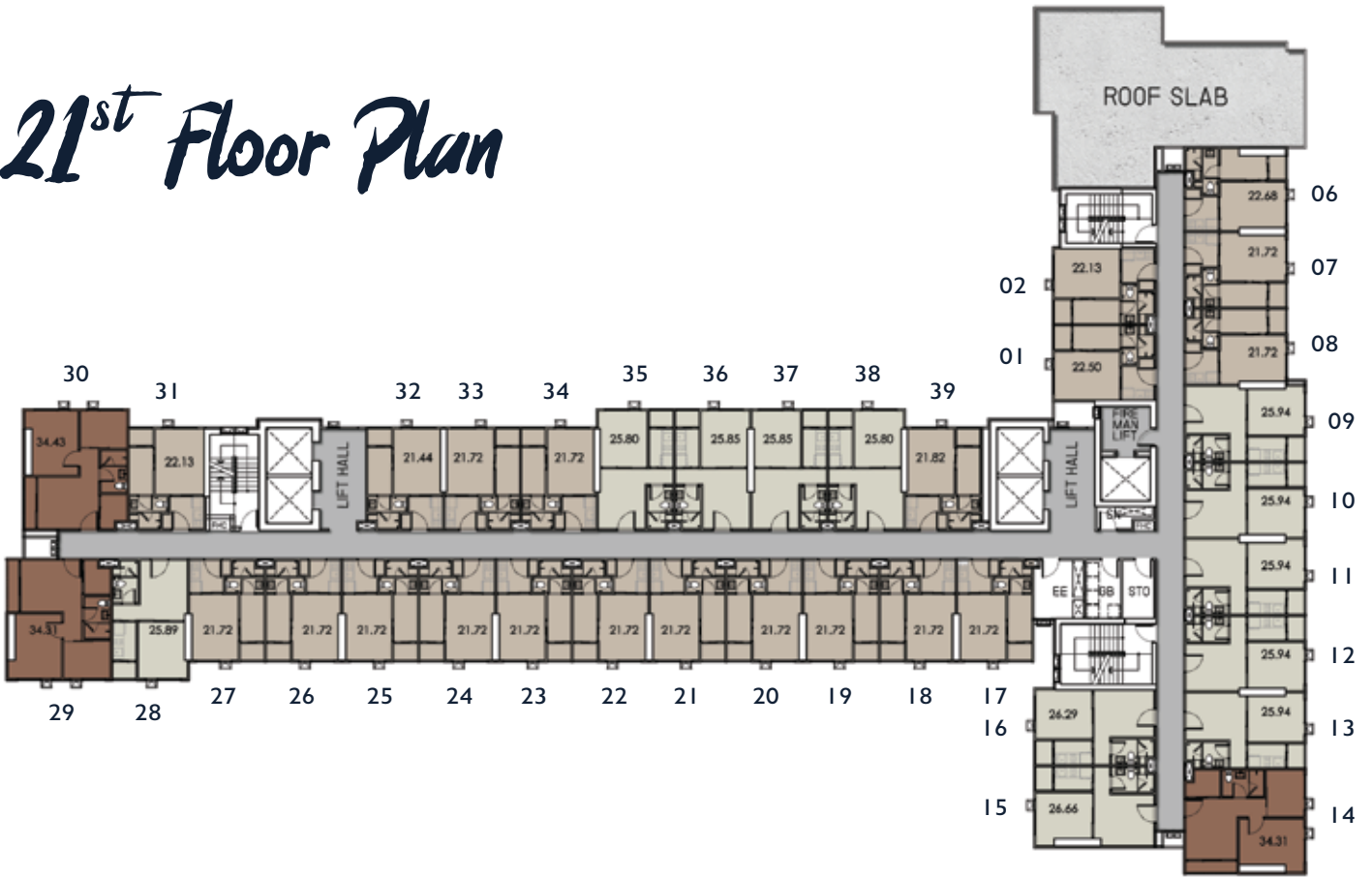
22 SQ.M.

26 SQ.M.

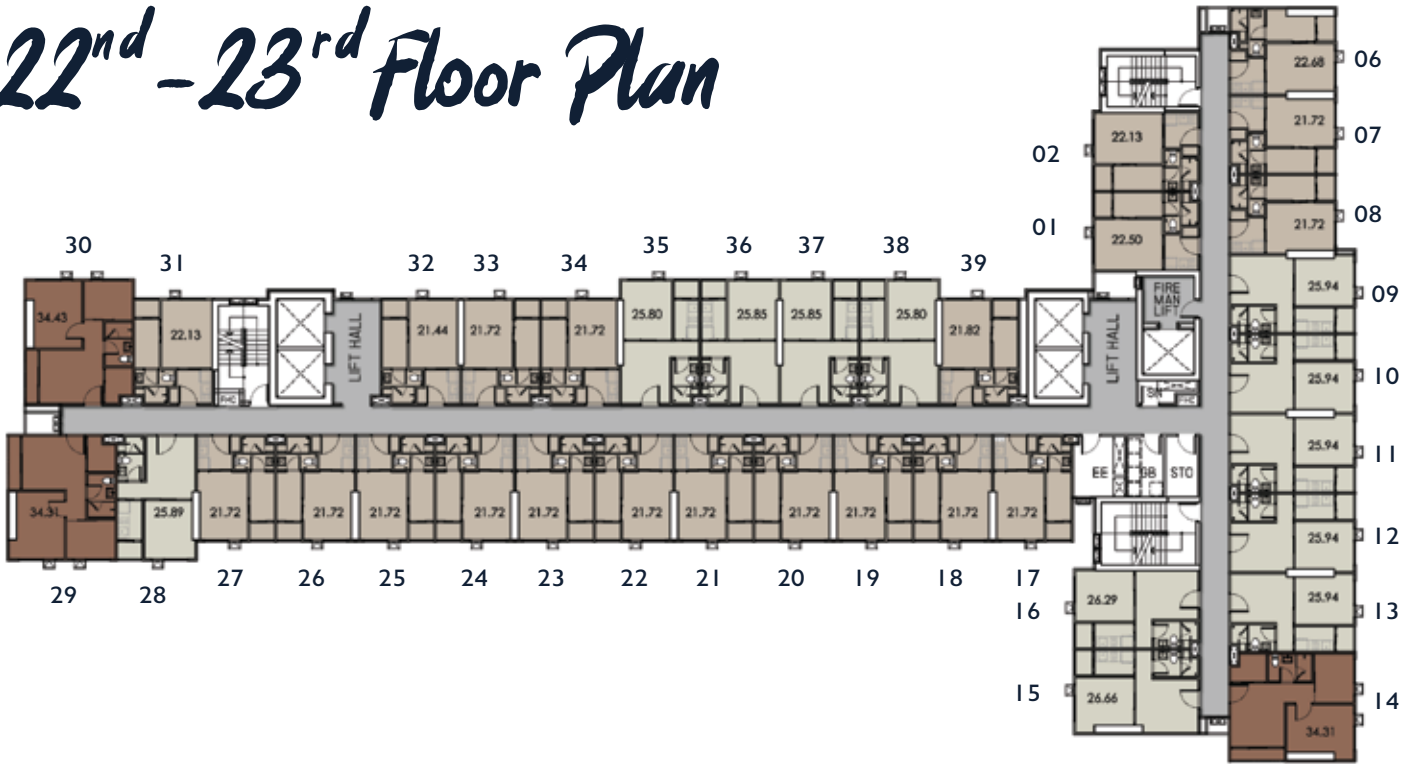
34.5 SQ.M.

*Layout plan and position of construction pole is varied by unit type in floor plan. The company reserves the right to change detail as appropriate without prior notice. The layout and space as defined here is approximated in size. Furniture in the layout and decoration detail is for advertising purpose only.

21st Floor Plan



22nd - 23rd Floor Plan



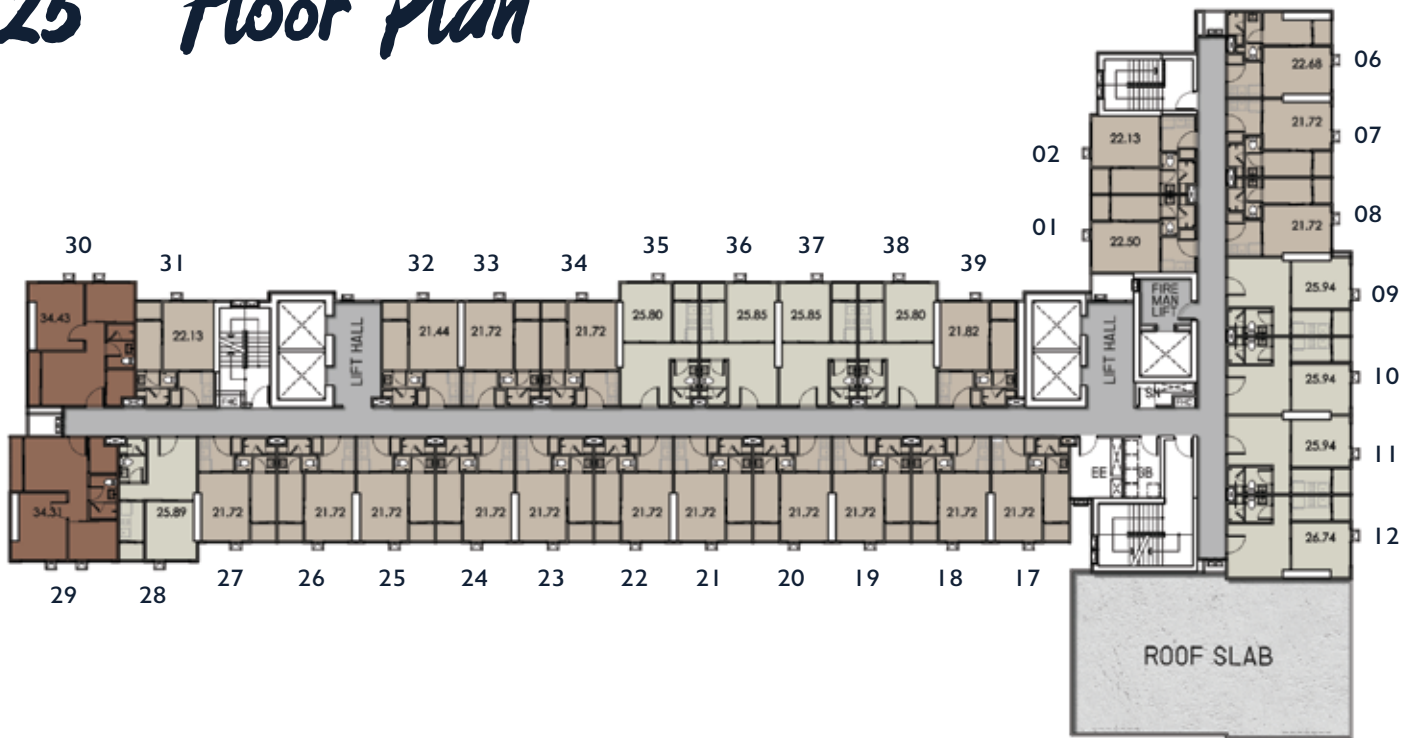
22 SQ.M.

26 SQ.M.

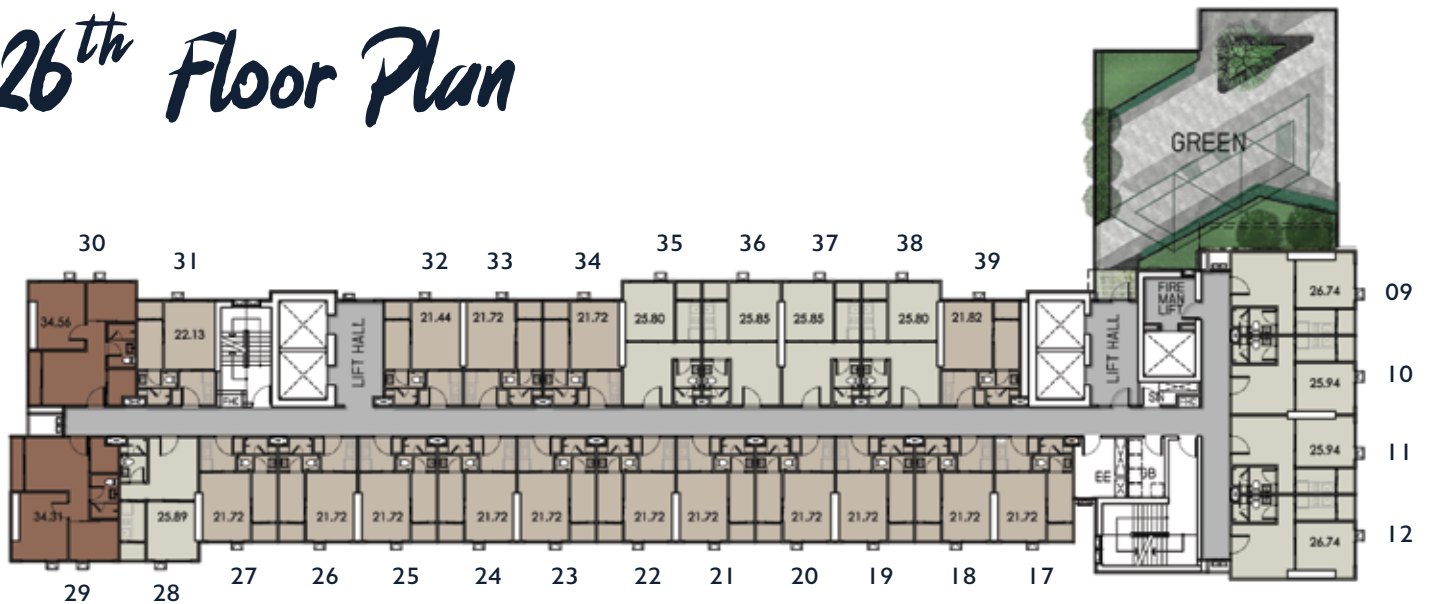
34.5 SQ.M.

*Layout plan and position of construction pole is varied by unit type in floor plan. The company reserves the right to change detail as appropriate without prior notice. The layout and space as defined here is approximated in size. Furniture in the layout and decoration detail is for advertising purpose only.

25th Floor Plan



26th Floor Plan



- 22 SQ.M.
- 26 SQ.M.
- 34.5 SQ.M.

*Layout plan and position of construction pole is varied by unit type in floor plan. The company reserves the right to change detail as appropriate without prior notice. The layout and space as defined here is approximated in size. Furniture in the layout and decoration detail is for advertising purpose only.

Unit Plan



1 BEDROOM
(SMART CLOSET)

22 Sq.M.



1 BEDROOM

26 Sq.M.



1 BEDROOM PLUS

34.5 Sq.M.

MAIN LOBBY



*COMPUTER GENERATED IMAGERY

MULTI SPORT ARENA



*COMPUTER GENERATED IMAGERY

GARDEN COURT



GARDEN COURT



SWIMMING POOL



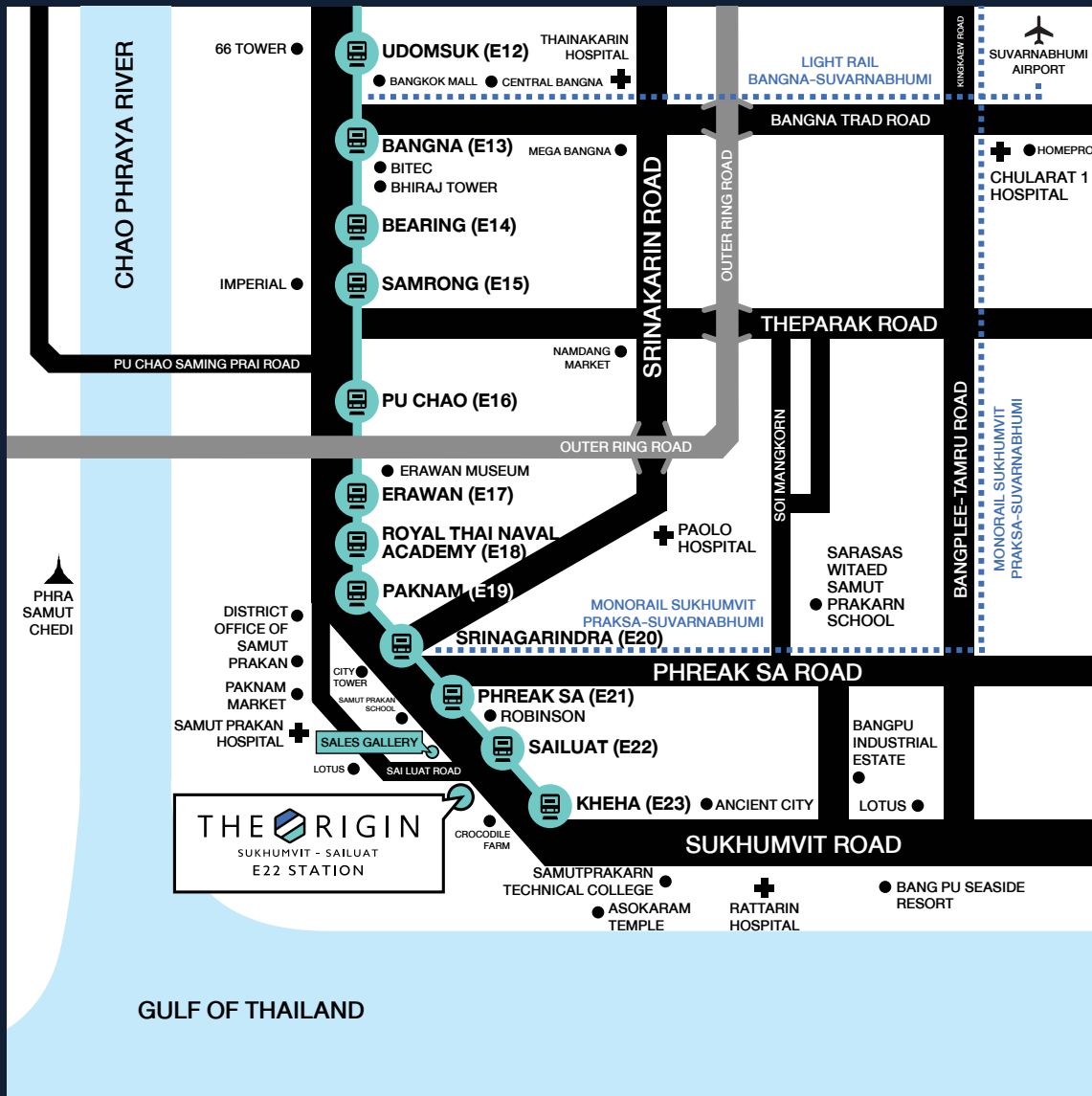
PRIVATE LOBBY



SWIMMING POOL 50 M.



*COMPUTER GENERATED IMAGERY



The Origin Sukhumvit – Sailuat E22 Station developed by Origin Sukhumvit Sailuat Co., Ltd., company address is 496 Moo 9, Samrong Nuea Sub-district, Muang Samutprakarn District, Samutprakarn Province 10270. Authorized directors are Ms. Kanokpailin Wilaikaew and Mr. Joompol Prawithana. Company registered capital is 1,000,000THB (One Million Baht) paid in full amount. Project location is Paknam Sub-district, Muang Samutprakarn District, Samutprakarn Province. Title deed no. 3311771, total land area is 3 Rai – 2 Ngan (approximated). The project is one high rise residential building with 31 storey and one parking building with 10 storey, consisted of 998 residential units and 3 commercial units. The project is under submitting for construction permit. The construction will be started in February 2021 and expected to complete by April 2023. Land is under mortgaged with Kiatnakin Bank Plc. The condominium will be registered as residential juristic person after completion. All unit owners have to pay all expenses for ownership as stated in condominium laws.



THE ORIGIN
SUKHUMVIT - SAILUAT
E22 STATION

020 300 000
WWW.ORIGIN.CO.TH

